



COMPANY PROFILE



18 Aasvoel Street, Newtown, Postmasburg, 8420



ABOUT US

Ekasi Eat Inn, founded by Melissa Jolene Mosiki in 2021, stands as a food cornerstone in the heart of Postmasburg 's Newton community. Aiming to become a household name in the local community, the eatery focuses on providing employment opportunities for the youth and offering affordable, traditional home-cooked meals and desserts to scholars and community members. Ekasi Eat Inn boasts strengths in its delectable food, friendly staff, and commitment to excellent customer service.

The business continues to thrive with a notable customer base among scholars and local community members. Melissa, the owner-founder, underscores her commitment to hard work, consistency, and providing an avenue for young individuals to contribute to their families' financial well-being. As Ekasi Eat Inn strives to overcome its challenges and grow, it incorporates alternative energy solutions like generators and gas stoves to mitigate the impact of load shedding.

OUR SERVICES

01

Catering

Crafting a menu that suits the event type, client preferences, dietary restrictions, and cultural considerations. Preparing and cooking food items with attention to taste, presentation, and quality

02

Takeaways

The menu changes every week. The typical takeaways consist of Fish and Chips, Russians and Chips, Beef and Pap, Burgers and Chips, Chicken and Chips or Chicken and Pap

03

Desserts

Desserts include Malva Pudding and Ice Cream but the menu changes weekly, although desserts are only available on weekends

04

Home-cooked meals

The menu changes every week and they concentrate on traditional home-cooked meals. The typical meals consist of Chicken and Chips or vegetables, Chicken and Pap or vegetables, Beef stew and pap or vegetables

STRONG POINTS

Budget Management:

Working with clients to establish a budget and offering solutions that align with their financial constraints. Tracking expenses, providing cost estimates, and making adjustments as needed.

Client Communication:

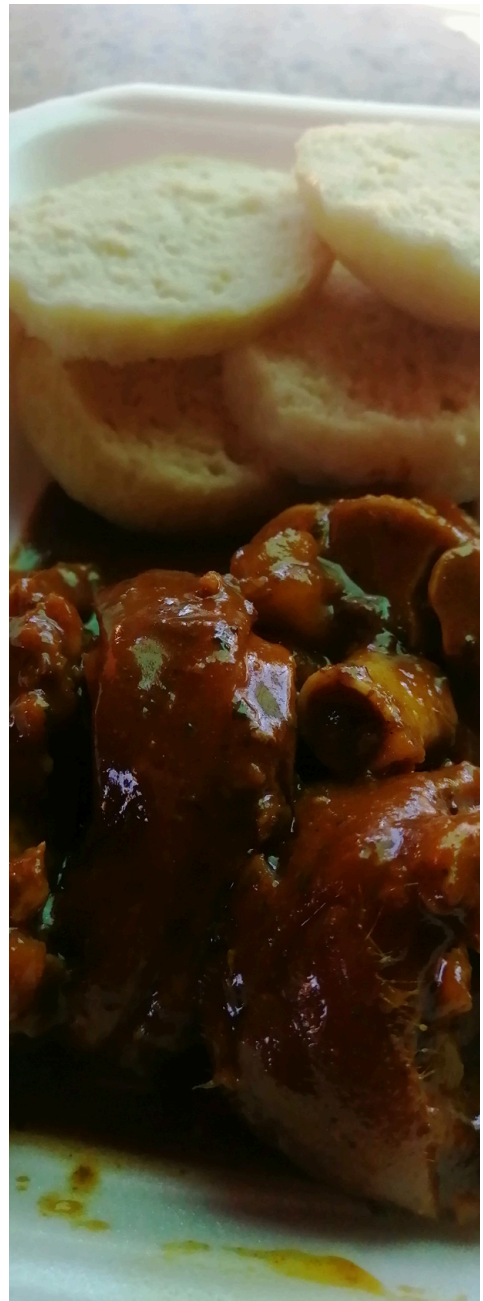
Maintaining clear and open communication throughout the planning and execution process. Providing updates, addressing concerns, and incorporating client feedback into the event details

Customer Service:

Ekasi Eat Inn prides itself on the service it delivers to its customers and continually strives to improve its service offerings to its customers

Physical Position:

Ekasi Eat Inn is well-positioned to attract a high number of passing trade





FUTURE PLANS

Ekasi Eat Inn's vision is to continue to grow the business and deliver consistent personalized service that will exceed customer expectations. Their mission is to provide an excellent experience to every customer in the Newtown area.

They will constantly innovate by using new ideas and trends to provide uncompromising standards and service. The main focus for the future will be twofold: Partner with the mining companies and cater for their events and parties, and eventually open a Shisanyama with a Car Wash.



GALLERY





CONTACT US



071 038 0380



mosinkimelissa@gmail.com



18 Aasvoel Street, Newtown,
Postmasburg,
8420

GET DIRECTIONS

